

# WSD QUALITY



The Wentzville School District is the fastest growing school district in the State of Missouri, adding on average over 500 students per year over the past 20 years. The WSD is now the 9th largest school district in the State. The District has thirteen elementary schools, three middle schools and four high schools. Currently the District has 17,400 students in grades K-12. The WSD is always seeking ways to increase rigor, relevance, and student performance.

## Performance Report

The Missouri Department of Elementary and Secondary Education (DESE) has released the Annual Performance Report (APR), and the Wentzville School District scored 97.5% in the evaluation system - up from 97.1% last year and the highest the District has scored since the state started using the evaluation tool five years ago. The APR is part of the Missouri Improvement Plan (MSIP 5), a rigorous evaluation tool for rating the performance of Missouri school districts. The District scored a perfect 100% in Academic Achievement, Graduation Rate and College and Career Readiness.

## Higher Achievement

Overall 2019 composite Missouri Assessment Program scores place the District in the top 10% of all school districts in the State of Missouri for the eighth consecutive year, while at the same time the District also maintains the lowest ADA expenditures (per pupil spending) in St. Charles County.

## Niche Ranks WSD #17

The WSD is ranked 17th best school district in Missouri according to the latest rankings released by Niche.com. Holt, Liberty and Timberland High Schools are ranked in the top 50 high schools in Missouri. The WSD is also ranked in the top 10% of school districts in the nation.

## Technology Initiatives

The WSD has a 1:1 Technology Initiative that places a high priority on up-to-date access and integration in and out of the classroom, including a program that provides every middle school and high school student in the District with a personal computer to use both at school and at home.





## Proposition C

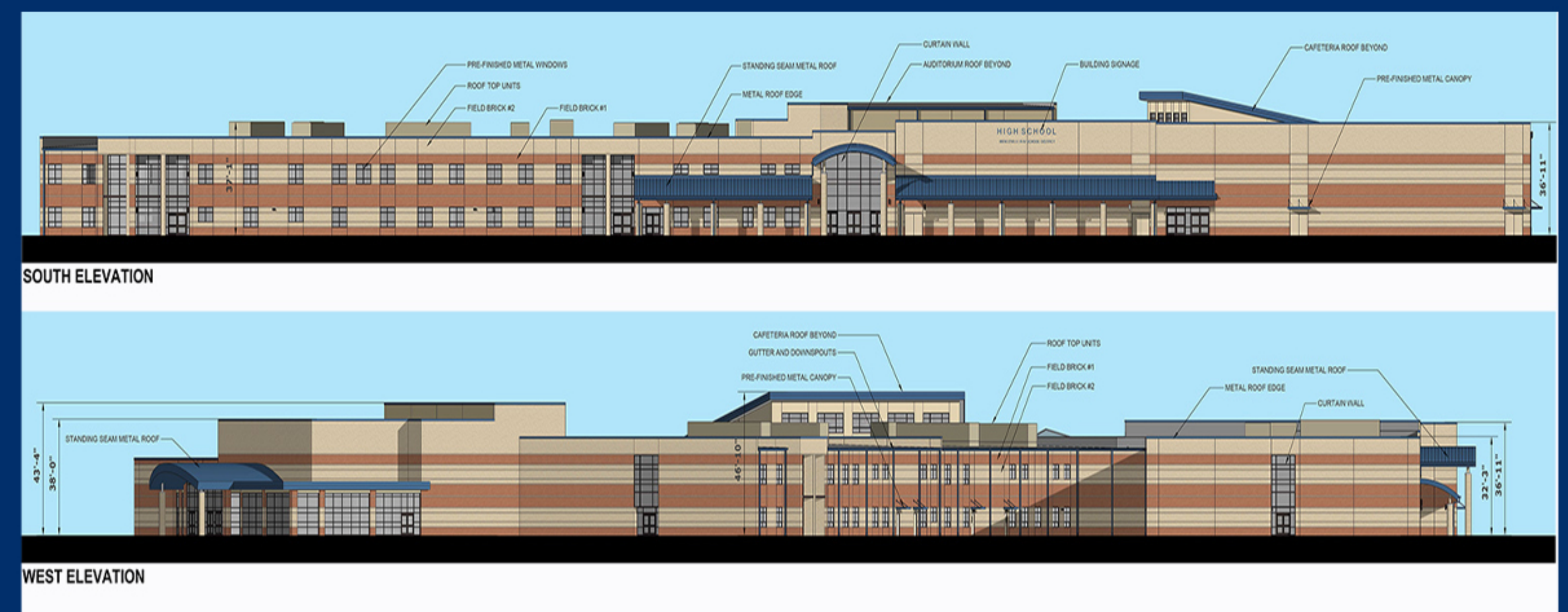
### Portrait of a Learner



**COLLABORATOR**  
**COMMUNICATOR**  
**CONNECTED**  
**RESILIENT**  
**HEALTHY/SAFE**  
**CREATOR**  
**PROBLEM SOLVER**  
**KNOWLEDGEABLE**

In conjunction with our five-year strategic plan, the District has unveiled its “portrait of a learner” blueprint, which highlights our mission to support the whole child in order to ensure successful outcomes for all students. As part of that renewed focus, the WSD has added 12 School Support Interventionist positions (one at each elementary building) to help address the growing, broad spectrum of needs of our students.

Proposition C, a \$105 million no-tax-increase bond issue, passed in June 2020 to build a new middle school on the same site where the District has built North Point High School, and to expand and/or renovate the District’s three existing middle schools, to address maintenance issues at existing buildings across the District and to purchase items related to school safety across the District.



### CAPS & Early College Program

### Project Lead the Way

Project Lead the Way (PLTW) has been offered in the WSD since 2007. We have adopted all three Project Lead the Way pathways in computer science, engineering, and biomedical science in our middle schools and high schools.



These project-based courses offer hands-on curricula that integrate science, technology, engineering, and math (STEM) and allow students to apply what they are learning to real-life applications. This style of learning engages students in discipline-specific content and empowers them to solve real-world challenges.

In 2018, the WSD partnered with other school districts in the county to launch a new hands-on learning experience for high school students called the St. Charles County Center for Advanced Professional Studies (CAPS) Consortium. The program provides students with valuable off-campus opportunities to work with mentors, engage in real-world problem solving and make professional connections in the workplace in our community. Students have the opportunity to participate in the Healthcare Academy, Global Business Entrepreneurship and Technology Solutions (IT & Creative Media) strands. Through the Early College Program, our high school students have the opportunity to work towards and potentially complete an associate degree while in high school through St. Charles Community College. Classes are taught by WSD teachers at Holt High School.

