

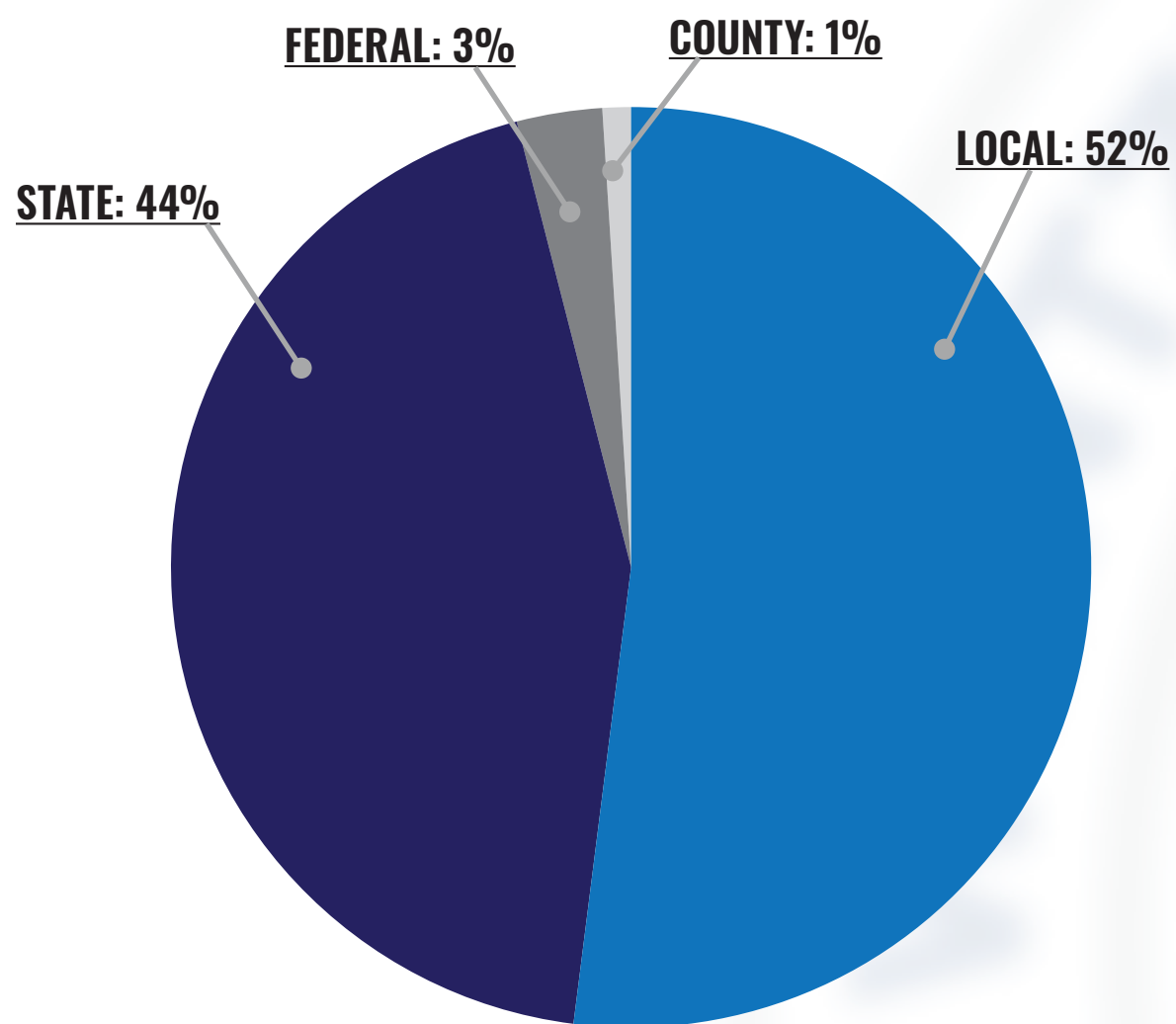
# FINANCE AT A GLANCE

**FOR FISCAL YEAR ENDING JUNE 30, 2020**

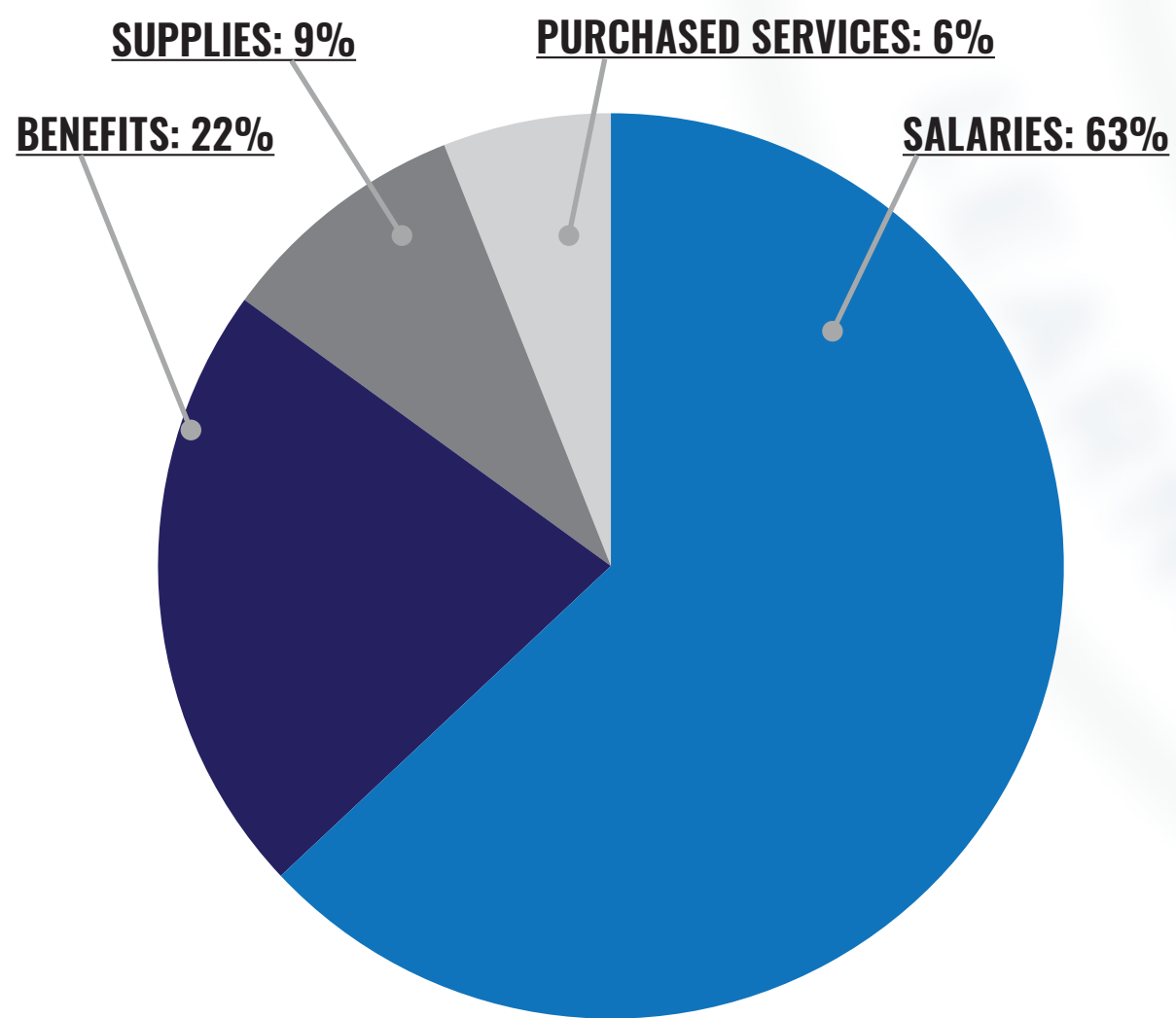
**Curtis Cain, Ph.D., Superintendent**  
**Richard Angevine, MBA, CPA, Chief Financial Officer**

June 30, 2020 financial statements were independently audited with a clean opinion.

## SOURCES OF OPERATING REVENUES (Funds 1 and 2)

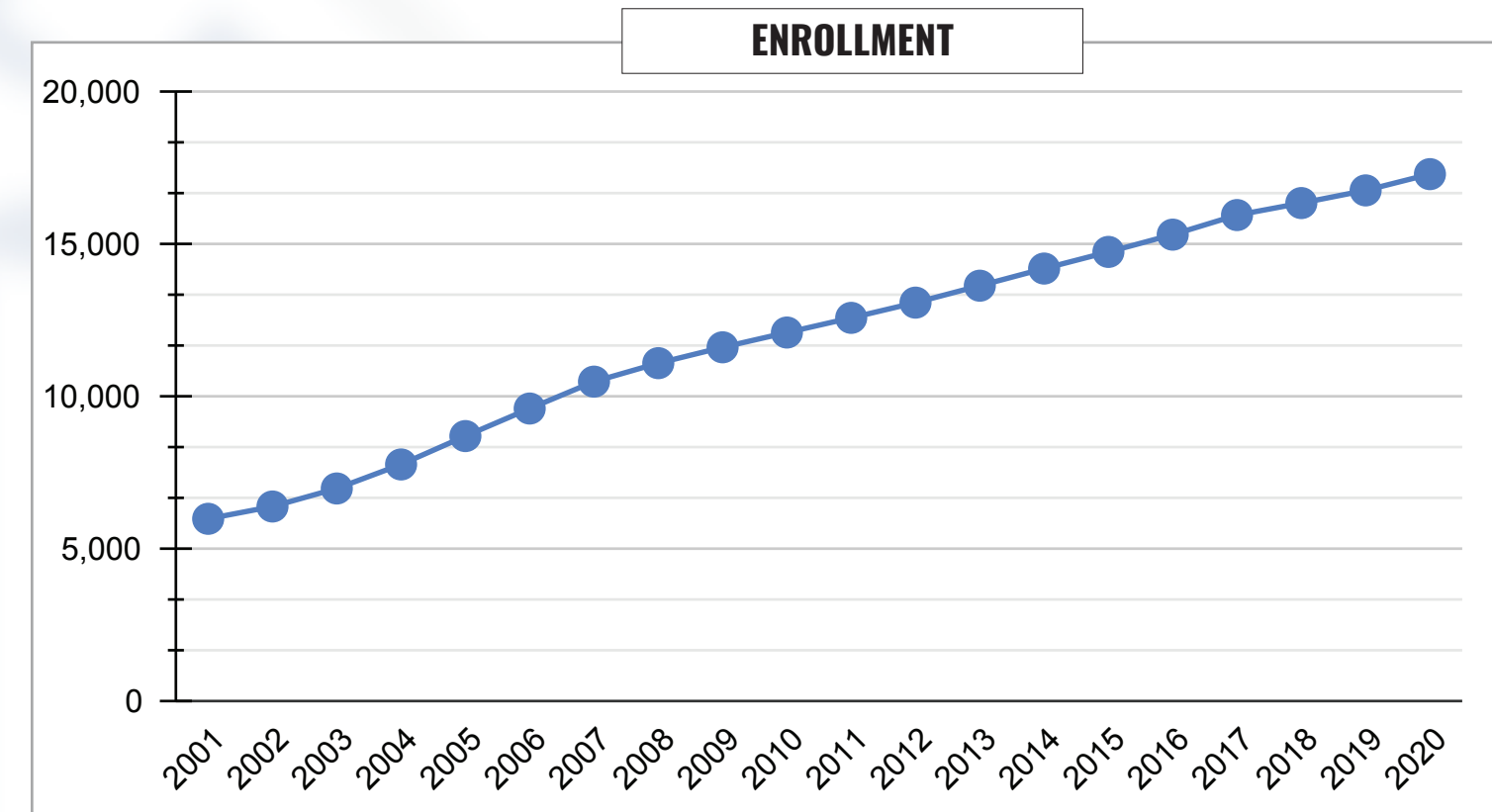


## USES OF OPERATING EXPENSES (Funds 1 and 2)



## TOTAL EXPENDITURES ALL FUNDS

	YEAR-END JUNE 30, 2020	2020-21 BUDGET
General Fund 1	\$75,330,536	\$88,252,889
Teachers Fund 2	\$119,090,519	\$136,444,292
Debt Service Fund 3	\$21,656,891	\$21,749,430
Capital Projects Fund 4	\$96,325,308	\$106,228,916
<b>Total</b>	<b>\$312,403,254</b>	<b>\$352,675,527</b>



## FUND BALANCES

Total Balance All Funds	\$139,174,855
Operating Fund Balance (Funds 1 and 2)	\$55,640,620
Operating Fund Balance (Funds 1 and 2) as a Percentage of Operating Expenses	28.62%

## ATTENDANCE AND TUITION

Operating expenditures per avg. daily attendance (ADA)

**\$11,208**

Non-Residence Tuition Rate

**\$11,587**



Moody's Bond Rating

**Aa1**

Total General Obligation Debt

**\$240,879,885**

## TAXES

Real Estate Assessed Values	\$1,927,091,401
Personal Property Assessed Values	\$391,489,142
Tax Rate	4.7586
Annual Tax To Own a \$200,000 Home	\$1,808.27
Tax Rate (2020-21)	5.2486
Annual Tax To Own a \$200,000 Home (2020-21)	\$1,994.47

## TOP 5 TAXPAYERS ASSESSED VALUES

General Motors Corporation	\$76,952,461
Mastercard Technologies LLC	\$43,872,713
RAVID Lake St. Louis LI LLC	\$8,507,896
Cuivre River Electric Cooperative	\$8,027,666
THF Wentzville	\$7,239,452

## STAFFING

Certified Staff	1340
Support Staff	1038
Administrators	98
<b>TOTAL:</b>	<b>2,476</b>
Average Teacher Salary	\$59,634
Teachers with Masters Degree or Higher	77.6%



Last updated March 1, 2021