



WSD Demographic Study

6/5/14

WSD Background

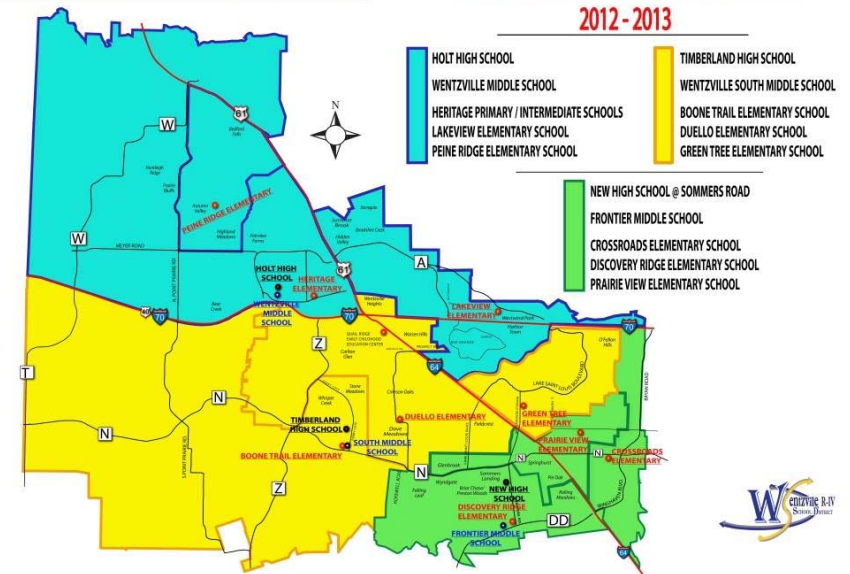


- The Wentzville School District serves 75,000+ residents in a 90 square mile area
- The WSD boundaries include all or parts of five communities - Wentzville, Lake Saint Louis, O'Fallon, Dardenne Prairie, Foristell, as well as rural parts of unincorporated St. Charles County

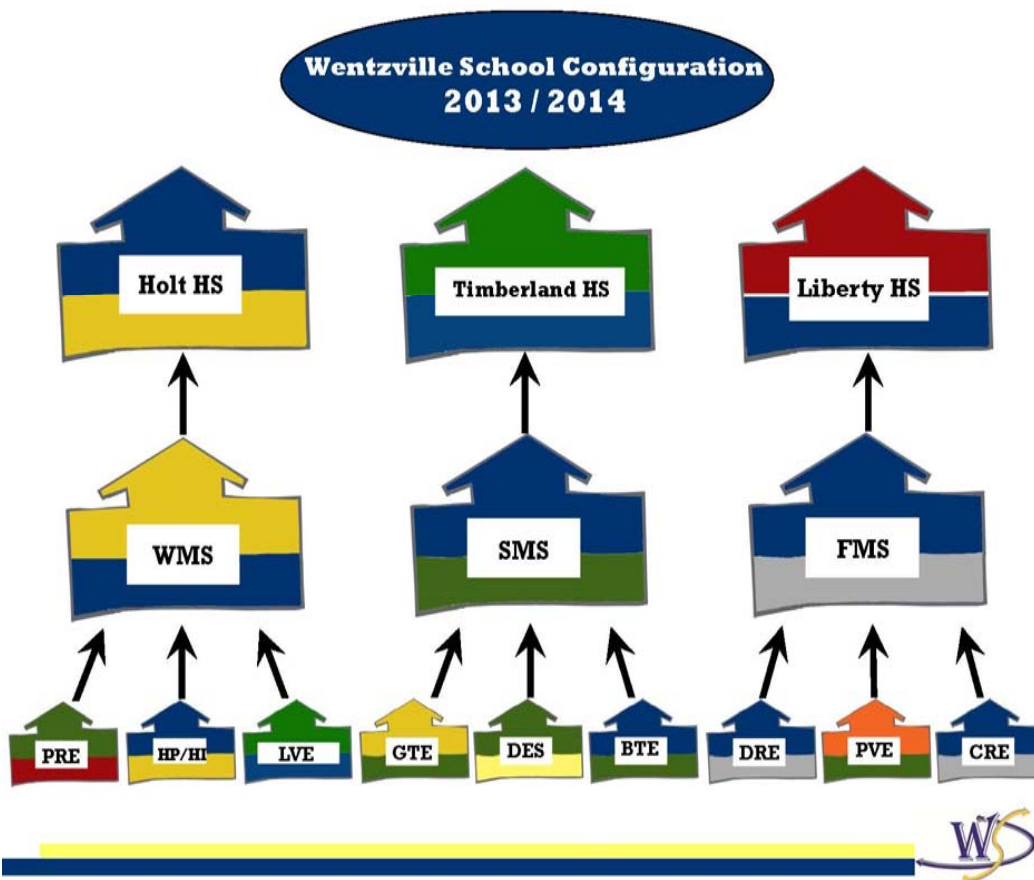
WENTZVILLE R-IV SCHOOL DISTRICT

APPROVED HIGH SCHOOL - MIDDLE SCHOOL BOUNDARIES

2012 - 2013



WSD Background



- The WSD has more than 14,000 students that attend 15 different schools
- Record enrollment growth continues...
- Since 2000 we have built nine new schools!

In Just the Past 24 Months...



- The District has added 75 classrooms at nine different schools
- Built a new centralized 8,000 sq. ft. transportation facility on 15 acres
- Opened Liberty High School for inaugural freshmen class

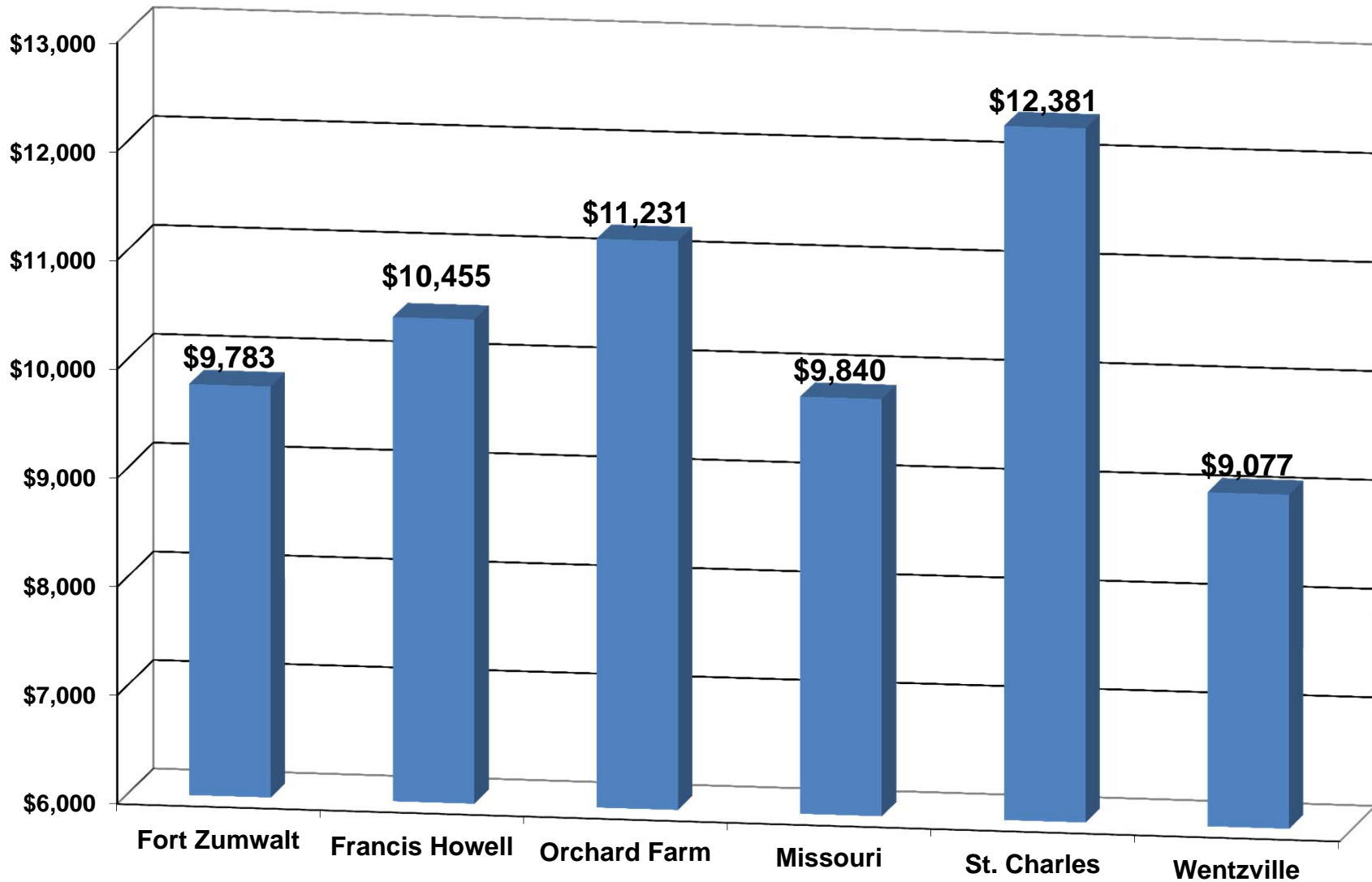
Return on Investment



Again this year our MAP scores are in the top 10% of all school districts in Missouri, and our ADA expenditures per pupil is below the state average and the lowest in St. Charles County.



St. Charles County School Districts 2012-13 Expenditures per ADA



School District	2013 Rate	2012 Rate	Amount of Change
Fort Zumwalt	\$4.8438	\$4.7936	\$0.0502
Francis Howell	\$5.3848	\$5.1829	\$0.2019
Orchard Farm	\$4.8344	\$4.6801	\$0.1543
St. Charles City	\$5.1359	\$4.9863	\$0.1496
Wentzville	\$4.9891	\$4.9891	\$0.0000

St. Charles County Tax Rates

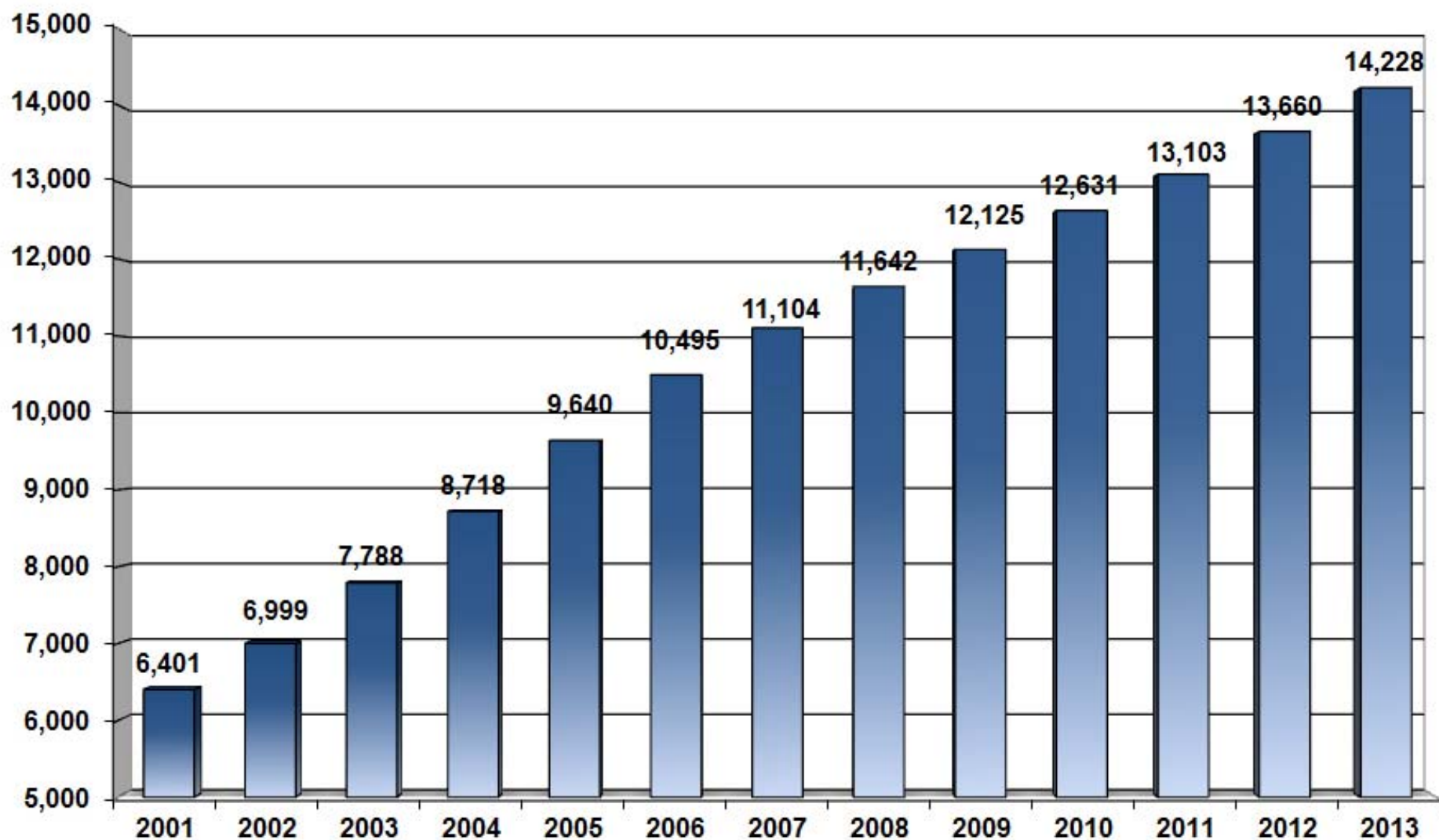
WSD Enrollment Trends



We are the fastest growing district in Missouri, adding on average 600+ students every year since 2001. Enrollment growth and construction have defined our district in the 21st Century.

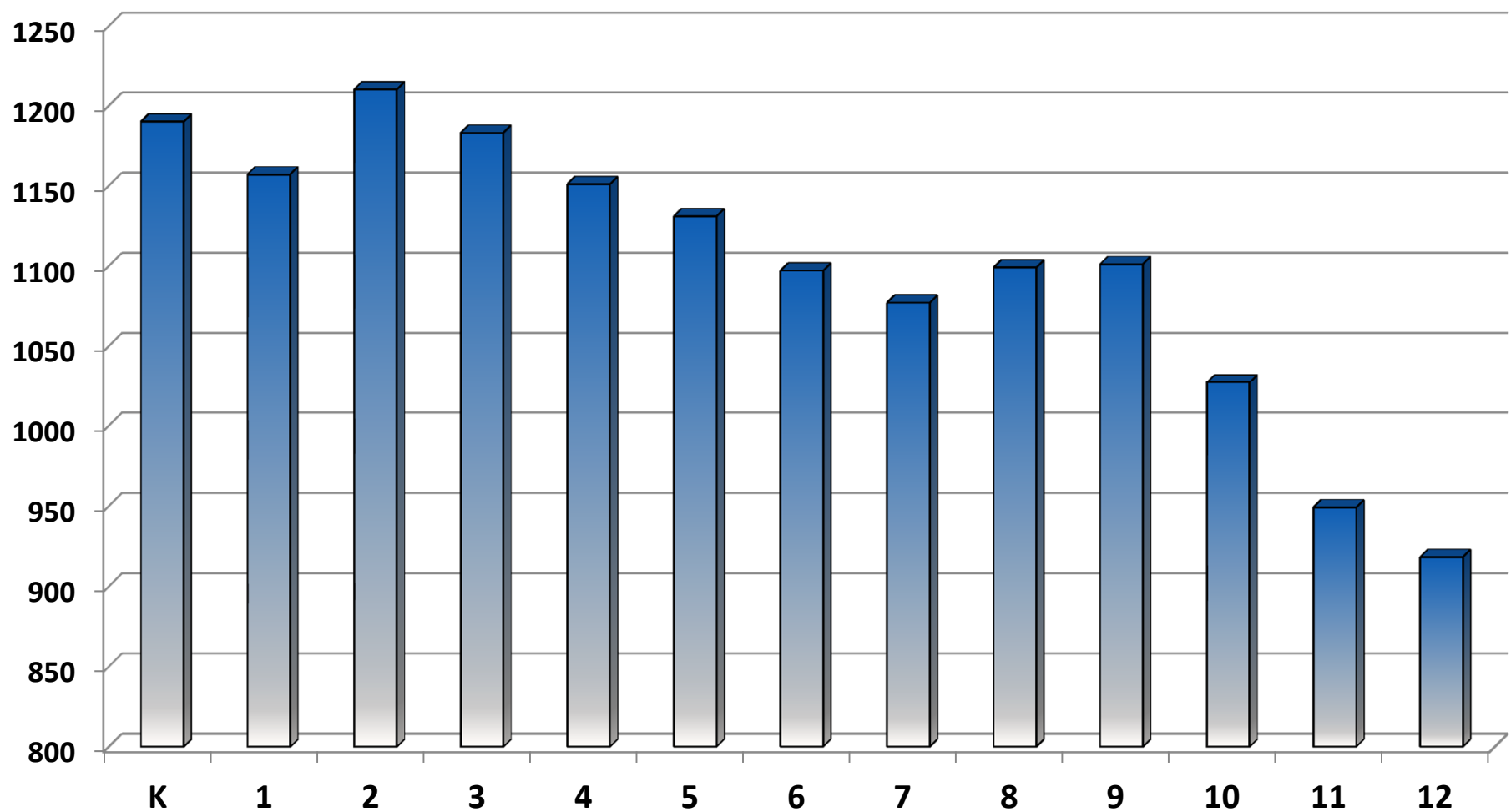


WSD Enrollment Trends



WSD Enrollment Trends

Enrollment by Grade Level



District Population Growth



According to the 2010 U.S. Census, the City of Wentzville added over 22,000 people between 2001-2010, growing by a whopping 322%, the largest percentage increase of any city in the state. The third fastest growing city at 162% was Dardenne Prairie.



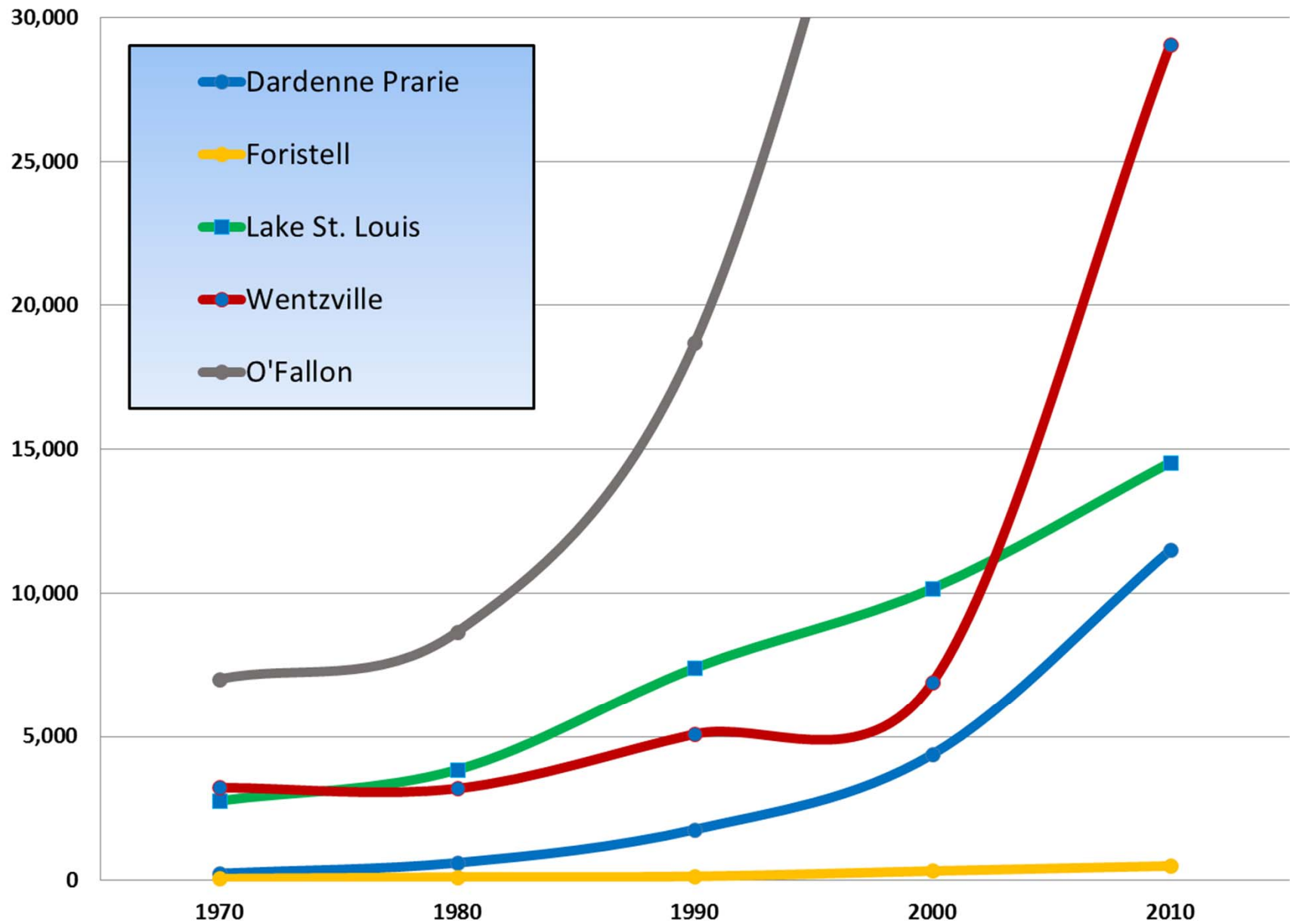
District Population Growth



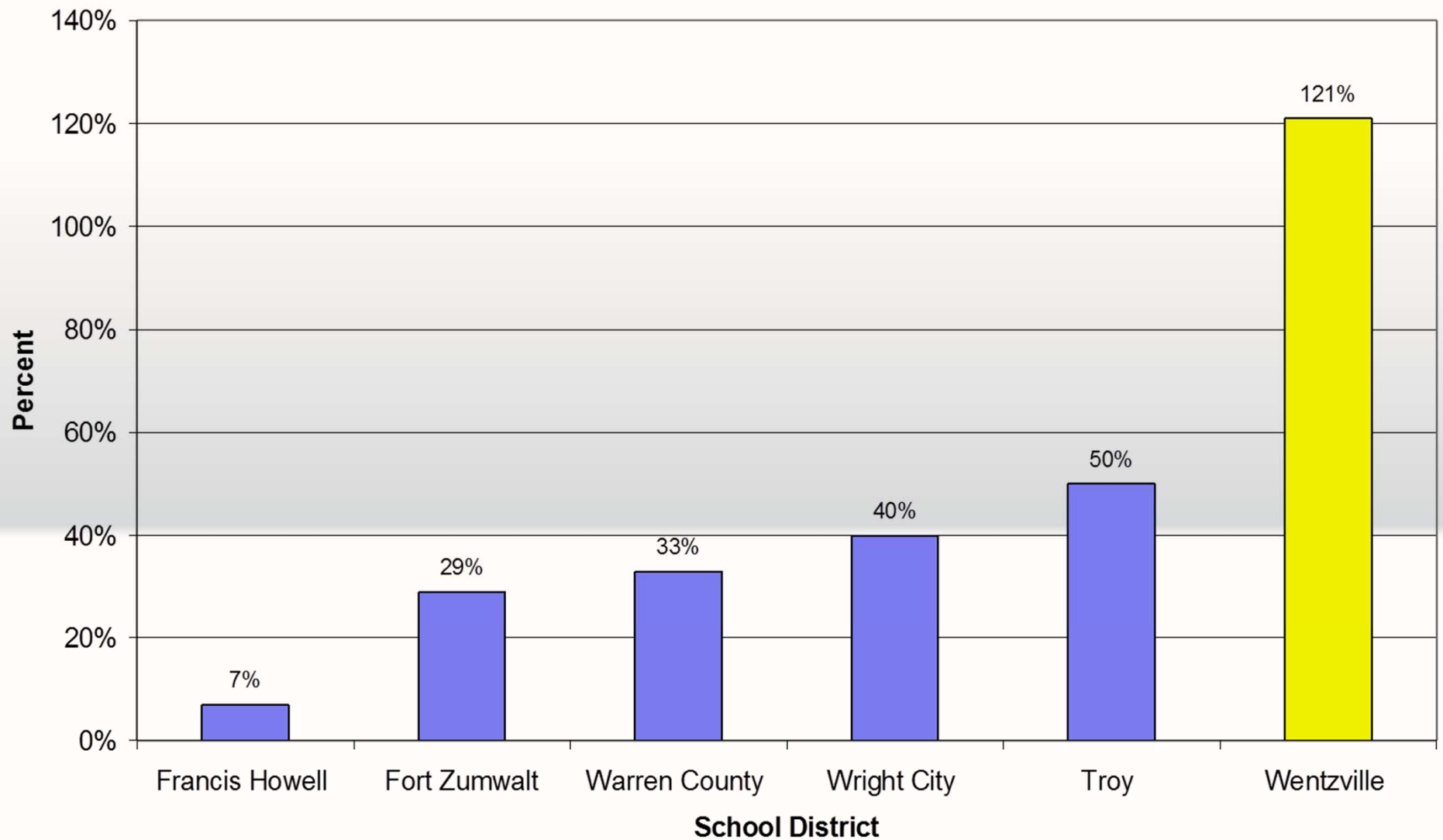
City	2000 Population	2010 Population	Percent Change	State Rank (637 Total)
Wentzville	6,896	29,070	322%	1
Dardenne Prairie	4,384	11,494	162%	3
O'Fallon	46,169	79,329	72%	22
Foristell	331	505	53%	34
Lake St. Louis	10,169	14,545	43%	47

In fact the five communities that make up the WSD (Wentzville, Lake St. Louis, O'Fallon, Foristell and Dardenne Prairie) were all in the top 50 fastest growing cities (out of 637) in Missouri!

Population in WSD Cities, 1970-2010



Change in Percent of Population Growth in School Districts from 2000-2010



New WSD Demographic Study



We know about our history of growth, but will it continue? To help us find out, we commissioned Business Information Services, LLC to provide the first comprehensive WSD Demographic Survey since 2007...

Demographic Data



Data sources for this study included:

- Missouri Department of Education
- Health Department
- National Center for Educational Statistics
- St. Louis realtors association
- St. Charles County Assessor's Office

Additional data was provided by:

- Lake St. Louis
- Wentzville
- O'Fallon
- St. Charles County



Demographic Study

“Key Findings”



- **“An academically strong school district, plentiful affordable housing and easy access to the St. Louis metro area has caused some of the most explosive student enrollment growth in the country.”**
- **“Three statistical models project that the WSD enrollment will be between 18,493 and 19,915 by 2023-24. This is assuming an annual enrollment growth of between 2.7% and 3.4%. For the last 10 years, the growth rate has been 6.4%.”**

Demographic Study

“Key Findings”



- **“Based on the 2010 Census, there would be 915 Kindergarten students for the 2014-15 school year. A regression model based on births in the school district shows there would be 880 Kindergarten students. We believe both of these estimates do not adequately capture the large number of new families moving into the district and are far too low.”**
- **The 2013-14 school year has 11 classes that are the largest in the district’s history. ”**

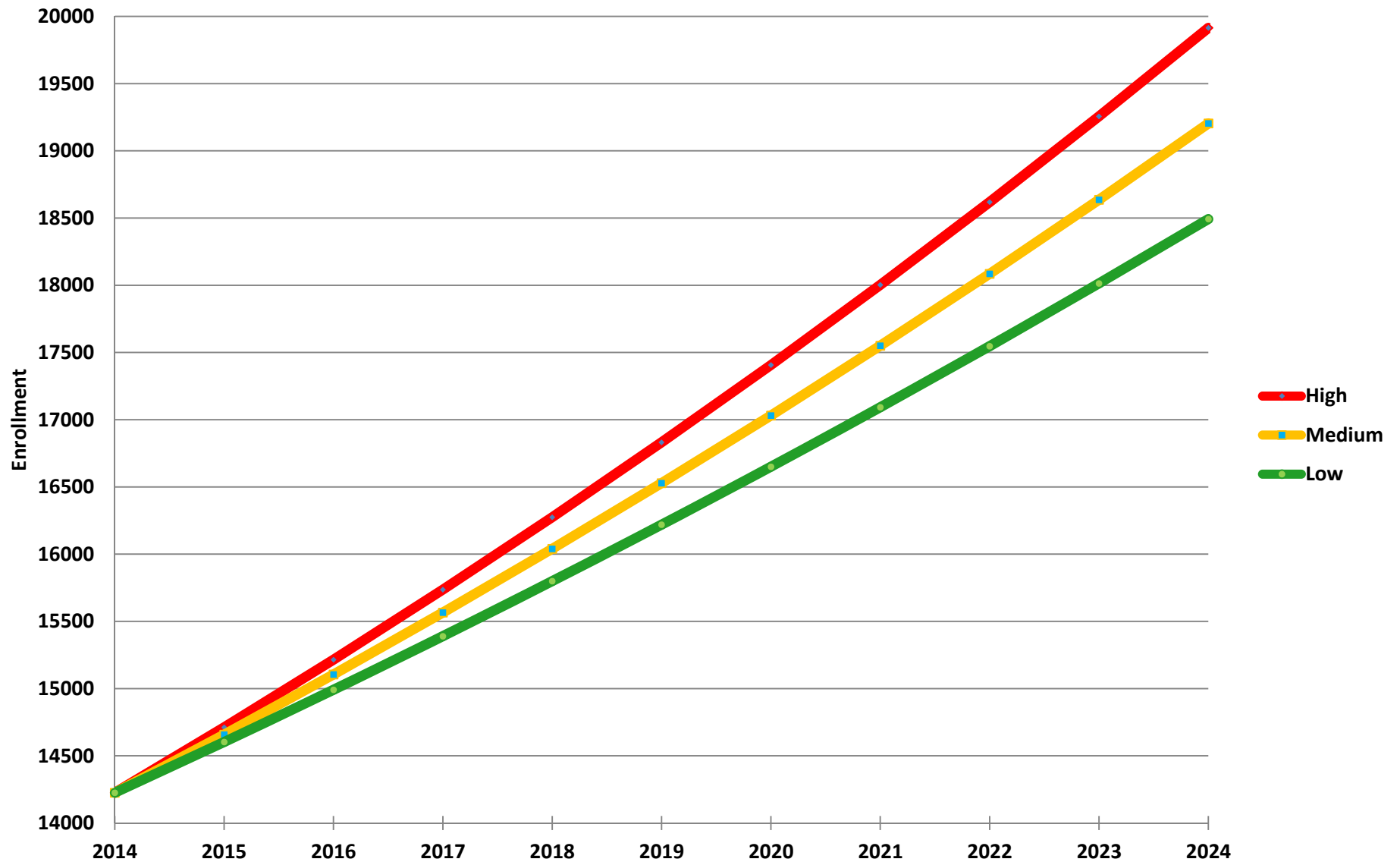
Demographic Study

“Key Findings”



- **“A primary concern in our analysis is the Wentzville District’s ability to house the anticipated number of students. By 2018, the District’s enrollment could be 16,832 in buildings designed to hold only 15,583 students.”**
- **“In order to accommodate the new students, we estimate that 2.5 million additional square footage of building space will be needed. Our calculations show that five of the 15 schools are over-capacity presently.”**

District Enrollment Projections to 2024



Demographic Study “Key Findings”



- **Based on these calculations, Boone Trail Elementary, Wentzville Middle and South Middle schools, and both Holt and Timberland High are currently overcrowded. By 2018-19, we are estimating the high-end of enrollment could be 16,832 in the district. We are showing there will be 9 out of 15 schools that will be over-crowded. All buildings in the district will be over-crowded by 2023-24, with more than 19,000 students enrolled in buildings designed to hold only 15,583.”**

New Subdivisions = More Growth



During the last two school years, there were three new subdivisions platted within the boundaries of the Wentzville School District.



New Subdivisions = More Growth



Since July 1st,
there have been
SIXTEEN new
subdivisions
platted within
the boundaries
of the District!

Demographic Study “Key Findings”



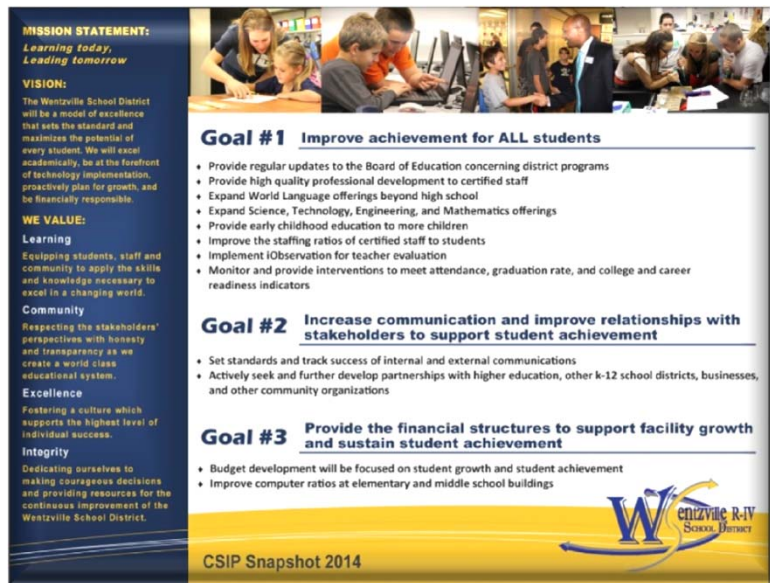
Based on these projections, the Wentzville School District could add more than 5,000 new students over the next decade!



New WSD CSIP Plan



The 2014-2019 Comprehensive School Improvement Plan has been approved by the WSD Board of Education and focuses on the improvement of the District's student achievement levels, programs, and services and will guide the direction of the WSD for the next five years.



New WSD CSIP Plan



One of the primary goals of the CSIP (based upon the feedback of our community) is to “Provide the financial structures to support facility growth and sustain student achievement.”



Thank You!

Any Questions?

