

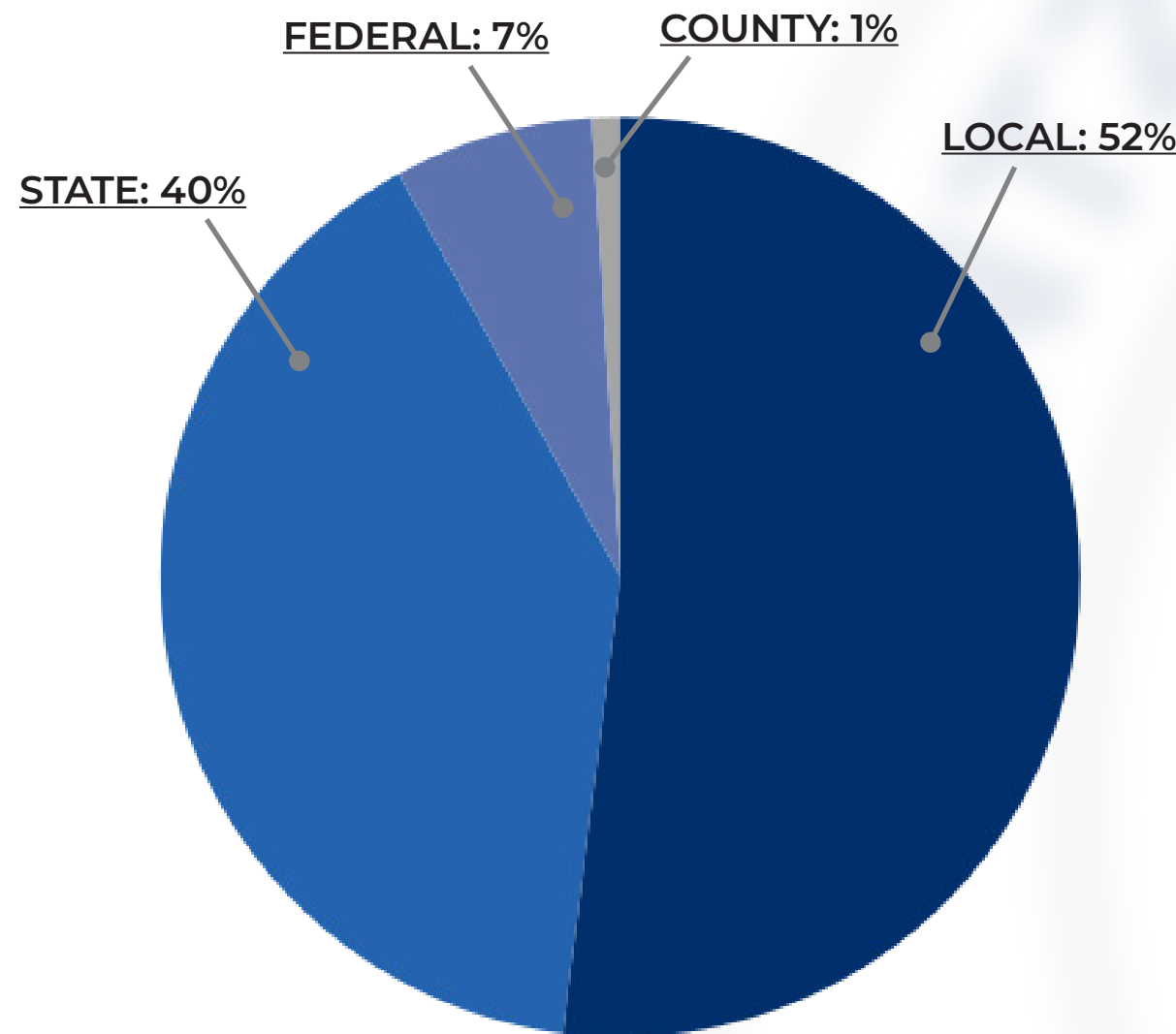
# FINANCE AT A GLANCE

## FOR FISCAL YEAR ENDING JUNE 30, 2022

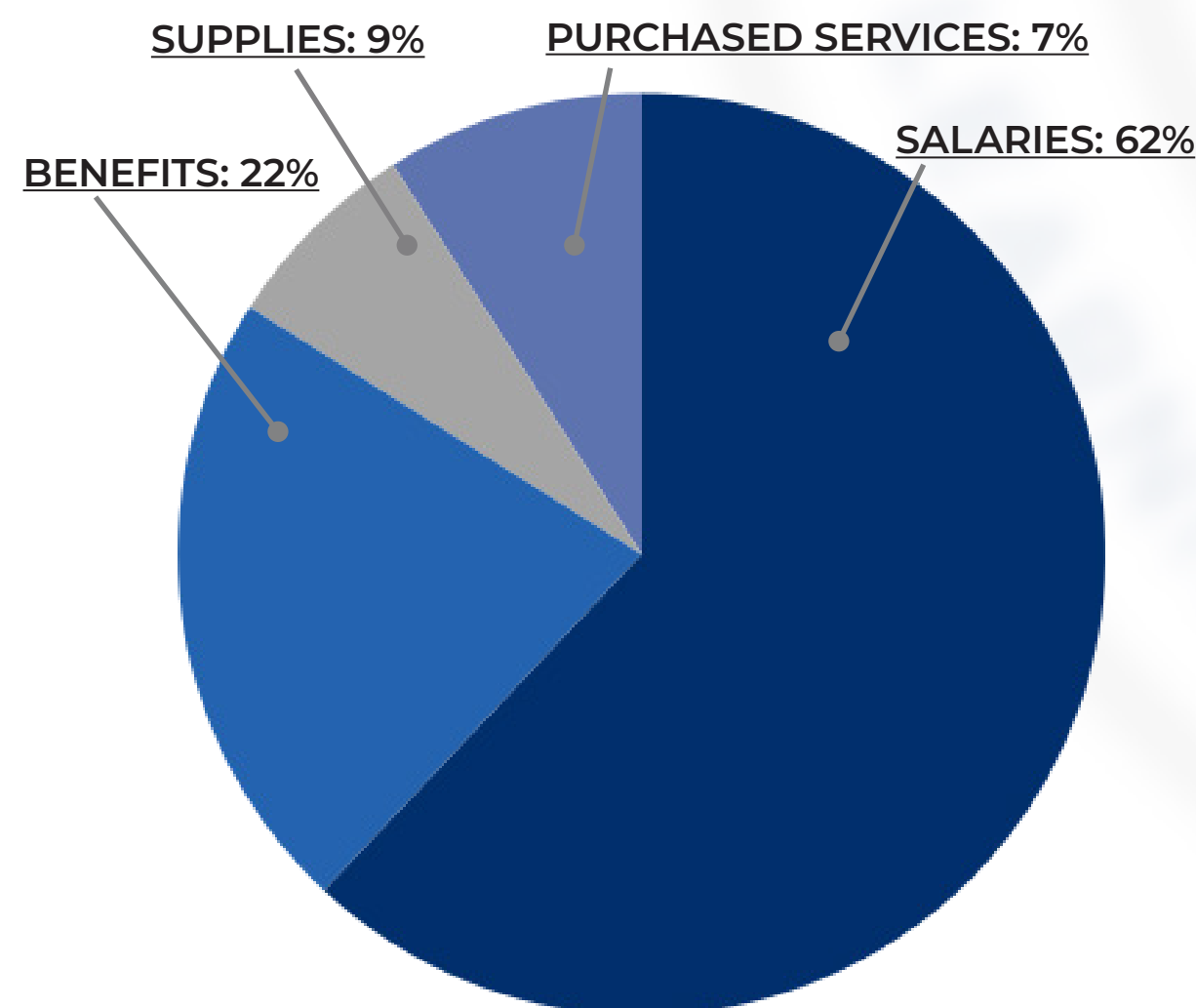
Danielle S. Tormala, Ed. D., Superintendent of Schools  
Richard Angevine, MBA, CPA, Chief Financial Officer  
Susan Dawson MBA, CPFO, SFO, Director of Finance & Accounting

June 30, 2022 financial statements were independently audited with a clean opinion.  
2022-23 Budget information as approved by WSD BOE June 2022.

### SOURCES OF OPERATING REVENUES (Funds 1 and 2)



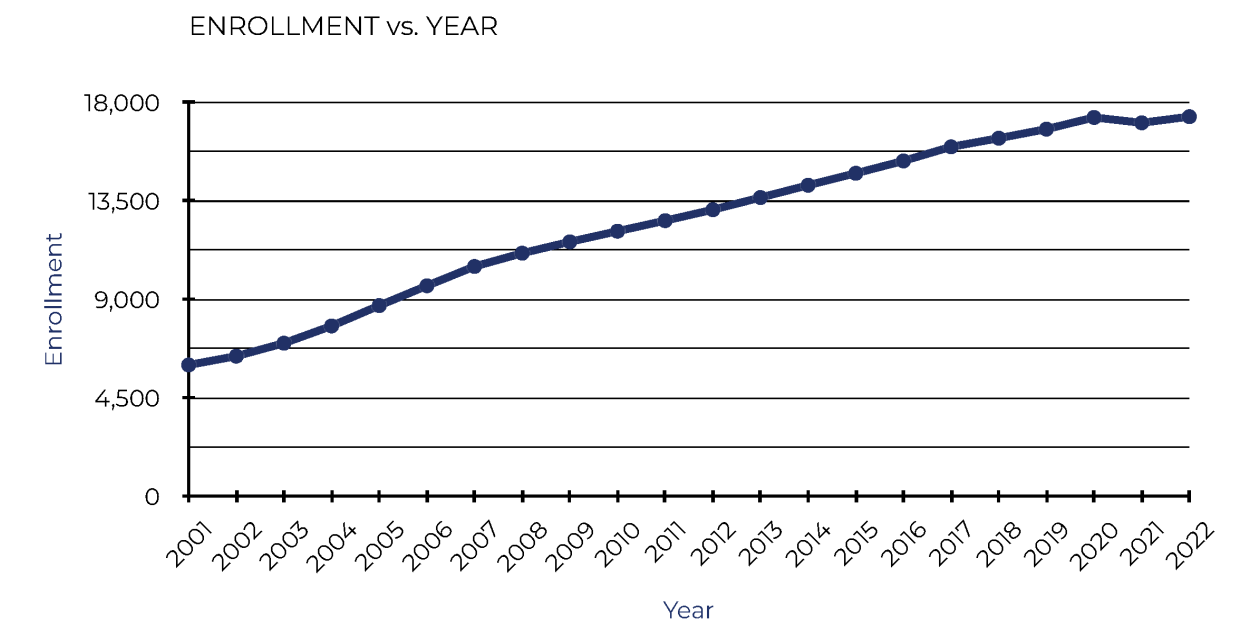
### USES OF OPERATING EXPENSES (Funds 1 and 2)



### TOTAL EXPENDITURES ALL FUNDS

	YEAR-END JUNE 30, 2022	2022-23 BUDGET
General Fund 1	\$86,704,90	\$93,051,412
Teachers Fund 2	\$133,679,650	\$140,551,511
Debt Service Fund 3	\$47,654,884	\$25,598,659
Capital Projects Fund 4	\$54,170,554	\$21,570,301
<b>Total</b>	<b>\$322,209,989</b>	<b>\$280,771,883</b>

### ENROLLMENT



### FUND BALANCES

Total Balance All Funds	\$161,444,324
Operating Fund Balance (Funds 1 and 2)	\$60,235,833
Operating Fund Balance (Funds 1 and 2) as a Percentage of Operating Expenses	27.25%

### TAXES

Real Estate Assessed Values	\$2,158,407,413
Personal Property Assessed Values	\$455,555,805
Tax Rate	5.0416
Annual Tax To Own a \$200,000 Home	\$1,915.81
Tax Rate (2022-23)	5.0428
Annual Tax To Own a \$200,000 Home (2022-23)	\$1,916.26

### STAFFING

Certified Staff	1,365
Support Staff	1,248
Administrators	98
<b>TOTAL</b>	<b>2,711</b>
Avg. Teacher Salary	\$63,006
Teachers with Masters Degree or Higher	80.3%

### REVENUE & EXPENDITURES PER ADA

Local tax effort per avg. daily attendance (ADA)  
**\$8,656**

Operating expenditures per avg. daily attendance (ADA)  
**\$12,091**

Moody's Bond Rating

**Aa1**

Total General Obligation Debt  
**\$319,101,754**

### TOP 5 TAXPAYERS ASSESSED VALUES

Mastercard	\$65,807,167
General Motors	\$62,877,994
Cuivre River Electric	\$8,420,134
Union Electric	\$7,716,886
THF Wentzville	\$7,144,151



Last updated Jan 26, 2023